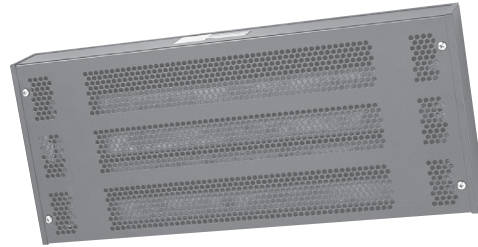
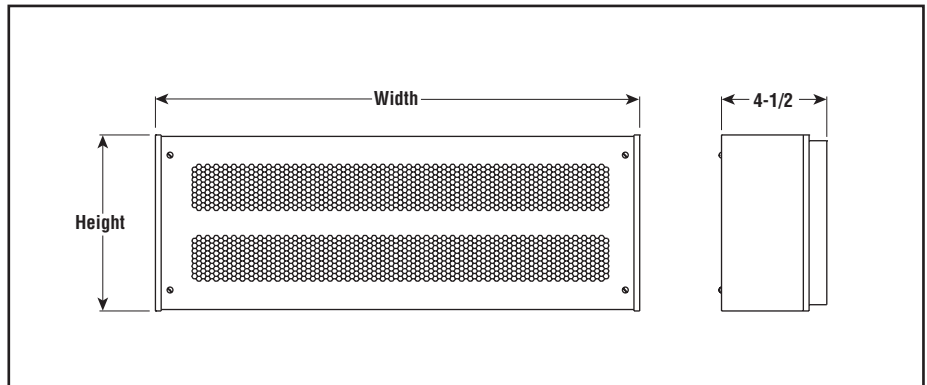


H Horizontal Convection Heater



- 1 - 3 kW
- 3,412 - 10,236 Btuh
- 120, 240 and 480 Volt
- Single Phase

Dimensions (Inches)



Description

Type H horizontal convection heaters are designed for the highest dependability for rugged plant areas and small manned or unattended areas.

Applications

- Crane Cabs
- Shop Offices
- Small Plant Areas
- Non-Hazardous Pump Sheds

Construction

Cabinet — Heavy gauge perforated steel case finished in corrosion resistant black polyester powder coat paint.

Heating Elements are strip type construction and are the most rugged, durable, long-lasting elements available to industry.

CAUTION — Not intended for use where flammable vapors, gases, liquids or other combustible atmospheres are present.

Advantages

- Long Life
- Durable for High Traffic Areas
- Easy Installation
- Corrosion Resistant

Specifications and Ordering Information

kW	Volts	No. Elem.	Amps	Btuh	Dimensions (In.)			Model	Stock	PCN	Wt. (Lbs.)
					Height	Width	Depth				
1	120	2	8.3	3,412	7-1/2	20-3/4	4-1/2	H-1801	S	261948	28
1	240	2	4.2	3,412	7-1/2	20-3/4	4-1/2	H-1801	NS	261956	28
1.5	120	2	12.5	5,118	7-1/2	26-1/2	4-1/2	H-2405	NS	262000	30
1.5	240	2	6.3	5,118	7-1/2	26-1/2	4-1/2	H-2405	S	262019	30
1.5	480	2	3.1	5,118	7-1/2	26-1/2	4-1/2	H-2405	NS	262027	30
2	120	4	16.7	6,824	11-1/4	26-1/2	4-1/2	H-2406	S	262060	32
2	240	4	8.3	6,824	11-1/4	26-1/2	4-1/2	H-2406	S	262078	32
2	480	4	4.2	6,824	11-1/4	26-1/2	4-1/2	H-2406	S	262086	32
3	240	4	12.5	10,236	11-1/4	26-1/2	4-1/2	H-2407	S	262131	32
3	480	4	6.3	10,236	11-1/4	26-1/2	4-1/2	H-2407	S	262140	32

Stock Status: S = stock AS = assembly stock NS = non-stock
To Order — Specify model, PCN, kW, volts, phase and quantity.

Refer to
WR-80, WR-90
in the Controls section.